

MAGIC KINGDOM IS CLOSED AND YOU'RE STUCK INSIDE! FOLLOW THE CLUES AND COMPLETE TASKS TO GET THE KEY AND ESCAPE THE PARK.

Welcome to our first virtual escape room! In this scenario, you're stuck in Magic Kingdom. You need to solve clues and complete tasks to find the key and get out.

All of these tasks can be done on your computer/phone, but you may find it helpful to have a piece of paper to sketch down ideas and clues on.

Everything you need is given in the backpack or the clues - you will not need to Google anything. But, there might be some extra information in your backpack that you don't need! Keep your backpack open to refer to during the escape.

This escape room is also available interactively at themouselets.com

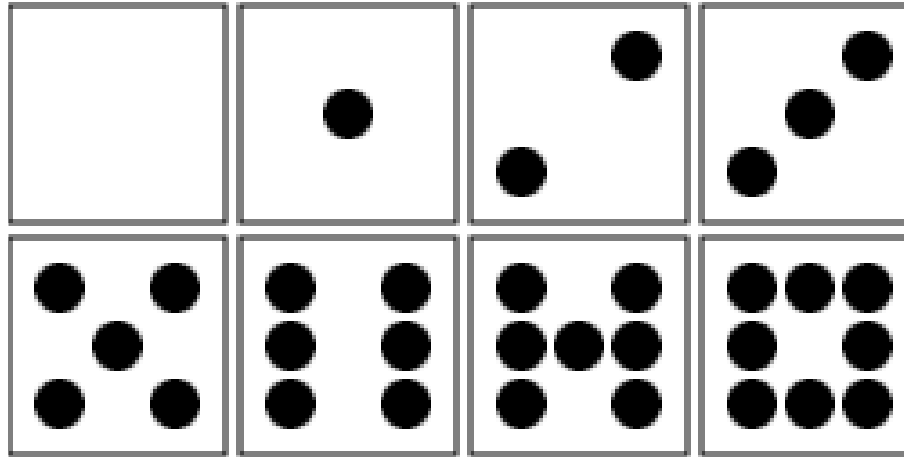
WHAT THIS GAME INCLUDES:

1. A full set of tasks and clues required to escape the park
2. An answer key that can be highlighted and copied into Notepad to reveal the text
3. A set of hints for each question that can be highlighted and copied into Notepad to reveal the text
4. A "backpack" full of items that you will want to refer to during the game (located after this slide).



*Find the key to open the gate and escape
Magic Kingdom!*

Your backpack



HAPPIEST PLACE ON EARTH

LE CHAPEAU
MAIN STREET USA
MAGIC KINGDOM
FLORIDA
80000

CASHIER: CHRIS
CUSTOMER: GUEST

PURCHASE:

GOOFY HAT	\$32.00
MINNIE EARS	\$17.00
HOUSE HAT	\$41.00

+% TAX: \$0.00

TOTAL: \$90.00

PAYMENT METHOD: CREDIT CARD
TRANSACTION #1696127672 -001
DATE: 08/07/2020 7:20:47 AM

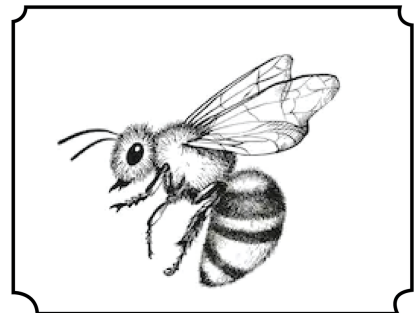
THANK YOU

BIG THUNDER MINING CO

NOTICE RED MINE CLOSED!

UNTIL FURTHER NOTICE
BY ORDER OF
BARNUBUS B. GREEN

YELLOW JACKET INFESTATION!



SEEKING MINERS WITH
BLUE BADGE
IN EXTERMINATION

Your backpack

A	B	C
D	E	F
G	H	I

J	K	L
M	N	O
P	Q	R

	S	
T		U
	V	

	W	
X		Z
	Y	



Fantasyland

- 19 **Bibbidi Bobbidi Boutique** Princess Makeovers. Separately priced experience.
- ATTRACTIONS**
- 20 **"It's a Small World"** Musical indoor voyage.
- 21 **Peter Pan's Flight** Indoor flying fantasy adventure.
- 22 **Mickey's PhilharMagic** 3D movie. Presented by Kodak®.
- 23 **Dream-Along With Mickey** Musical stage show.
- 24 **Fairytale Garden** Storytime with Belle.
- 25 **Snow White's Scary Adventures** Journey inside through the dark.
- 26 **Cinderella's Golden Carrousel** Soar over Fantasyland.
- 28 **Ariel's Grotto** Meet "The Little Mermaid."
- 29 **Pool's Playful Spot** Outdoor play area.
- 30 **The Many Adventures of Winnie the Pooh** Roll, bounce and float through indoor adventures (monuments in the dark).
- 31 **Mad Tea Party** Spin 'round in a teacup.

- DINING**
- A** **Cinderella's Royal Table** American cuisine. Characters at breakfast and lunch.
- R** **Pinocchio Village Haus** Pizzas, chicken baskets and salads.
- S** **Scoutie's Landing** Frozen Coca-Cola®.
- T** **The Friar's Nook** Hot dogs, French fries, sandwiches, salads and beverages.
- Y** **Mrs. Potts' Cupboard** Ice cream.
- U** **Enchanted Grove** Beverages. Hosted by Minute Maid®.

Mickey's Toontown Fair

- ATTRACTIONS**
- 32 **Minnie's Country House** Walk through Minnie's home.
- 33 **Mickey's Country House** Walk through Mickey's home.
- 34 **Toontown Hall of Fame Tent** Meet Disney Princesses and Fairies.
- 37 **Donald's Boat** Water play area.
- 38 **The Bagstermer at Gooly's Wiseacre Farm** Crazy kiddie coaster. Minimum height 35"/89cm. Expectant mothers should not ride.

Tomorrowland

- ATTRACTIONS**
- 39 **Tomorrowland Speedway** Drive a race car. Minimum height 32"/81cm. Minimum height to ride alone 54"/133cm.
- 40 **Space Mountain** Indoor roller coaster. Minimum height 44"/112cm.
- 41 **Astro Orbiter** Fly outdoors in a spaceship.
- 42 **Tomorrowland Transit Authority** Roll through Tomorrowland. Presented by Alamo® Car Rental.

★ Move It! Shake It! Celebrate It! Street Party
Dance and sing with some of your favorite characters, performing multiple times daily. See TIMES GUIDE.

- 43 **Walt Disney's Carousel of Progress** Audio-Animatronics show through time.
- 44 **Buzz Lightyear's Space Ranger Spin** Intergalactic interactive adventure. Inspired by Disney•Pixar's "Toy Story 2."
- 45 **Stitch's Great Escape!** Dark, interactive alien experience. Minimum height 40"/102cm.
- 46 **Monsters, Inc. Laugh Floor** Help power the city of Monstropolis as you laugh with Mike Wazowski and friends during this hilarious, interactive show, inspired by Disney•Pixar's "Monsters, Inc."

DINING

- W** **Cosmic Ray's Starlight Cafe** Burgers, ribs, rotisserie chicken, sandwiches. Hosted by Coca-Cola®.
- X** **Auntie Gravity's Galactic Goodies** Ice cream, smoothies, sundaes.
- V** **The Lunching Pad** Smoked turkey legs.
- Z** **Tomorrowland Terrace Noodle Station** Orange chicken, beef & broccoli, chicken baskets, noodle bowls. Open seasonally.

Your backpack

Number Substitution Cypher

A	B	C	D	E	F	G	H	I	J
1	2	3	4	5	6	7	8	9	10

K	L	M	N	O	P	Q	R	S	T
11	12	13	14	15	16	17	18	19	20

U	V	W	X	Y	Z
21	22	23	24	25	26



A	• —	J	• — — —	S	• • •
B	— • • •	K	— • —	T	—
C	— • — •	L	• — • •	U	• • —
D	— • •	M	— —	V	• • • —
E	•	N	— •	W	• — —
F	• • — •	O	— — —	X	— • • —
G	— — •	P	• — — •	Y	— • — —
H	• • •	Q	— — • —	Z	— — • •
I	• •	R	• — •		

TASK 1

After a long day in Magic Kingdom, you head to Tom Sawyer's Island before the park closes. Before you know it, it's 10 pm and all the guests are gone.

Magic Kingdom is officially closed, and you are trapped on Tom Sawyer's Island. As you make your way around the island, you notice some items on the ground (a park map, some loose papers, a Sorcerer's of Magic Kingdom playing card, and an old receipt). Are these clues to get out of the park?



You head up the stairs to look at the park. The only way off the island are the rafts.

TASK 1

It looks like there are some sort of instructions to turn the rafts on and return to Frontierland. How do you turn on the rafts?

RAFTS WILL TURN ON. I
PUSH THE RED BUTTON AND THE
NOT PUSH OFF FROM THE DOCK.
SOMEONE'S ISLAND, PLEASE DO
TO TURN ON THE RAFTS FOR TOM
MEMBERS
INSTRUCTIONS FOR CAST

- A. Push the red button
- B. Pull the string to activate the motor.
- C. Push the raft off from the dock and float across.
- D. Push the lever down

HIGHLIGHT AND COPY FOR A HINT:

HIGHLIGHT AND COPY FOR THE ANSWER:



HARPER'S
MILL

© 2010
Disney
World
Resort
Company

YOU'VE REACHED FRONTIERLAND!

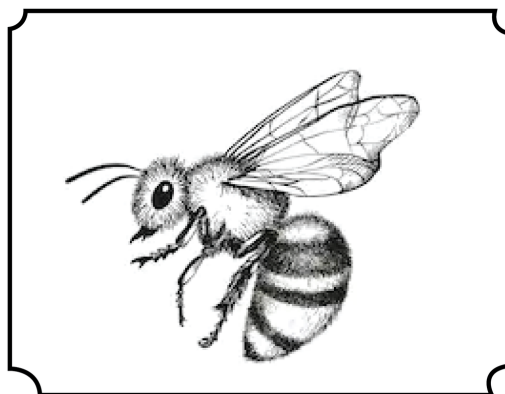
You make your way over to Big Thunder Mountain Railroad. The ride is shut down for the night. While you wait you think of where to go next and admire some of the details in the queue.

BIG THUNDER MINING CO

NOTICE RED MINE CLOSED!

UNTIL FURTHER NOTICE
BY ORDER OF
BARNUBUS B. GREEN

YELLOW JACKET INFESTATION!



**SEEKING MINERS WITH
BLUE BADGE
IN EXTERMINATION**



TASK 2

You walk towards Liberty Square and hear the Country Bear Jamboree. Why is it on at night? You decide to investigate. You look around the main room. There are paintings on the walls of different bears, claw marks on the floor, and a door that requires a four digit code.



TASK 2



What is the code to open the door?

- A. 4, 3, 7, 3
- B. 7, 4, 3, 4
- C. 3, 4, 4, 7
- D. 5, 7, 4, 3

HIGHLIGHT AND COPY FOR A HINT:

HIGHLIGHT AND COPY FOR THE ANSWER:



TASK 3

Once inside the Country Bear Jamboree, you hear the distinctive clicking of old animatronics. Are they giving you a hidden message? Remember to refer to your backpack if you need it!



-- 0- -0 000 00 --- -0

Where do you need to go next?

- A. Goofy's Barnstormer
- B. Swiss Family Treehouse
- C. Haunted Mansion
- D. Many Adventures of Winnie the Pooh

HIGHLIGHT AND COPY FOR A HINT:

HIGHLIGHT AND COPY FOR THE ANSWER:



TASK 4

The door to the Haunted Mansion is open and you wander in. You hop on the doombuggy to take a ride.



TASK 4

During the ride, you hear the song Grim Grinning Ghosts playing. The ride ends. Where do you need to go next?

Grim Grinning Ghosts

*when hinges creak in doorless chambers
and strange and frightening sounds echo through the halls
Whenever candle lights flicker where the air is deathly still
that is the time when ghosts are present
practicing their terror with ghoulish delight
when the crypt doors creak, and the tombstones quake
spooks come out for a swinging wake
Happy haunts materialize
and begin to vocalize
grim grinning ghosts come out to socialize
Now don't close your eyes and don't try to hide
or a silly spook may sit by your side
shrouded in an Unusual disguise
they pretend to terrorize*

Where do you need to go next?

- A. Dumbo
- B. Laugh Floor
- C. Peter Pan
- D. Pirates of the Caribbean

HIGHLIGHT AND COPY FOR A HINT:

HIGHLIGHT AND COPY FOR THE ANSWER:



TASK 5

You walk through Fantasyland to Storybook Circus and head over to the Dumbo ride.



You're at Dumbo, but you don't see any clues. Maybe something in your backpack can help? Where are you going next?

- A. Small World
- B. Splash Mountain
- C. Jungle Cruise
- D. Stitch's Great Escape
- E. Teacups

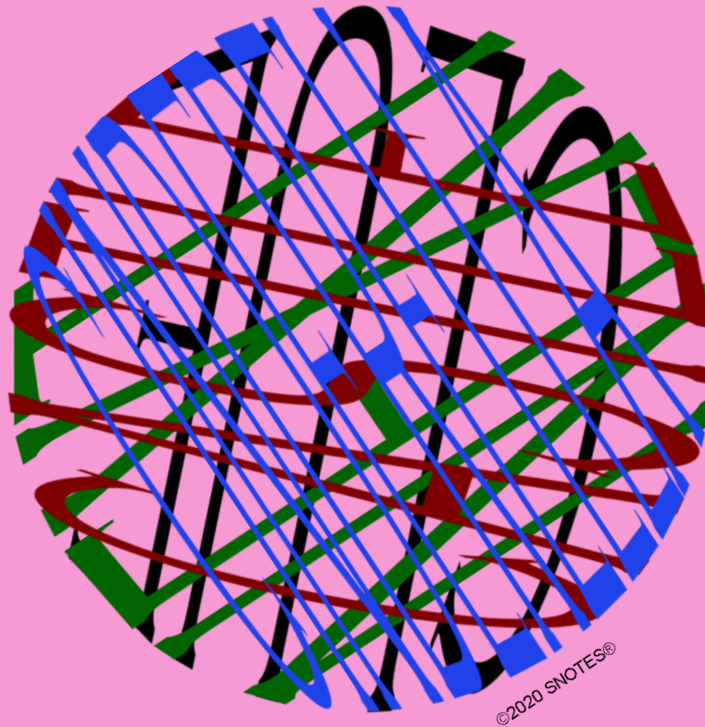
HIGHLIGHT AND COPY FOR A HINT:

HIGHLIGHT AND COPY FOR THE ANSWER:



TASK 6

You walk through Tomorrowland to Stitch's Great Escape. There are alien symbols and murals outside of Stitch. Could one of the help you get out of the park?



Where do you need to go next?

- A. Princess Fairytale Hall
- B. Bibbidi Bobbidi Boutique
- C. Gaston's Tavern
- D. Cinderella Castle

HIGHLIGHT AND COPY FOR A HINT:

HIGHLIGHT AND COPY FOR THE ANSWER:



TASK 7

You arrive at Cinderella Castle but gate is padlocked. There are three riddles in front of you.

"The host of me is quite nice-- always right at hand."

"The total number of members that live in me is one minus a grand."

"There is so much to see, but if you're scared go ahead and hide."

"Just make sure to watch out for those trying to hitch a ride."

"My original title didn't make any sense at all"

"So many complaints were cast that I was renamed, no longer a banquet hall."

"I'm not a ride, so don't guess that route,"

"but I am located inside a place that describes what Disney is all about."

"Some Say I'm outdated, but I don't agree"

"It's hard not to laugh and have and good time on me!"

"Your guide will fill your trip with hollers and claps,"

but to enjoy your journey better, I suggest you bring along some 'ginger snaps' "

What is the 3 digit code to the padlock?

- A. 8, 3, 10
- B. 26, 13, 1
- C. 3, 13, 25
- D. 10, 1, 14

HIGHLIGHT AND COPY FOR A HINT:

HIGHLIGHT AND COPY FOR THE ANSWER:



TASK 8

You're inside the castle and admire the mosaics. One of the most popular versions of Cinderella was written in French by Charles Perrault in 1697, under the name *Cendrillon ou la petite pantoufle de verre*. The popularity of his tale was due to his additions to the story, including the pumpkin, the fairy-godmother and the introduction of "glass" slippers. Your last stop is a shop on Main Street with a French name.



Where is your last stop?

- A. Adventureland Bazaar
- B. Le Chapeau
- C. Les Halles
- D. Merchant of Venus

HIGHLIGHT AND COPY FOR A HINT:

HIGHLIGHT AND COPY FOR THE ANSWER:



FINAL TASK

You've arrived at Le Chapeau! Where is the key? There's a box on the table with a combination lock that requires three numbers. You try the numbers you used on the other lock, but they don't work.



What are the numbers?

- A. 21, 30, 6
- B. 32, 17, 41
- C. 12, 39, 38
- D. 3, 9, 25

HIGHLIGHT AND COPY FOR A HINT:

HIGHLIGHT AND COPY FOR THE ANSWER:



POPULATION 50,000 **THE MAGIC KINGDOM** ELEVATION 50 FT.
WALT DISNEY WORLD

YOU'VE ESCAPED!

You open the box and find the key to the gate. You unlock it and say goodnight to Magic Kingdom.

Thank you for completing "Escaping Magic Kingdom". We hope you enjoyed this virtual escape room. If you have any questions, or would like to use this at an event, please contact themouselets@gmail.com. You can find more Disney fun at www.themouselets.com, and be sure to follow us on Instagram at [@themouselets](https://www.instagram.com/themouselets)

